



## **NDIS Medium Term Accommodation (MTA) in Sydney**

Safe, supported homes for up to **90 days** while permanent housing is arranged.

Better Now Disability Services provides trusted **MTA Sydney** for NDIS participants needing short-term, accessible housing during a transition. Fully furnished homes, flexible stays, and support that matches your plan.



# WHAT IS MTA?

## Is Medium Term Accommodation Right for Your Plan?

**Medium Term Accommodation (MTA)** is temporary housing funded by the NDIS when you can't live in your usual home yet, and your long-term housing isn't ready.

### When MTA is typically used:

- ▶ Leaving hospital or rehabilitation
- ▶ Waiting for SDA placement
- ▶ Waiting for home modifications to finish
- ▶ Temporary housing needed before supports begin
- ▶ Safety or housing instability during a transition

You stay in a furnished, accessible home while your next housing step is finalised.





# WHO BENEFITS + WHY BETTER NOW

## Who Benefits From MTA Sydney?

MTA supports participants who need stability while long-term living is arranged. It helps you avoid rushed decisions and keeps support consistent through change.

### You may benefit if you are:

- ✓ Waiting for SDA
- ✓ Transitioning out of hospital
- ✓ In a home-modification gap
- ✓ Between housing options
- ✓ Needing safe housing urgently



## Why Choose Better Now Disability Services?

### What you get with Better Now MTA:

- ✓ NDIS-standard safe housing
- ✓ Modern, accessible homes
- ✓ Calm, supportive environment
- ✓ Experienced staff + support coordinators
- ✓ Locations close to transport, shops, and health services



We focus on comfort, safety, and a smooth transition into your next long-term home.



# WHAT'S INCLUDED + STAY DETAILS + VALUES

## What's Included in Our MTA Service

MTA supports participants who need stability while long-term living is arranged. It helps you avoid rushed decisions and keeps support consistent through change.

- ▶ Fully furnished, ready-to-live-in home
- ▶ Accessible layout and mobility supports
- ▶ Optional in-home support through your plan
- ▶ Access to therapy, health, and transport links
- ▶ Safe short-term housing with dignity and routine

NDIS MTA usually provides **up to 90 days**, giving time to organise permanent housing, SDA entry, or complete home modifications. Daily meals, personal care, and transport are funded separately through other parts of your NDIS plan.





# CONTACT + MTA LOCATIONS

## Get Started With Better Now MTA Sydney



**0433 916 727**



**info@betternowdisabilityservices.com.au**



**193 Lakemba Street, Lakemba NSW 2195**

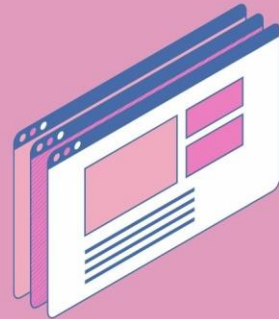


**Mon–Fri: 8am–5pm**

**Get Started:** Call or submit your details to check eligibility and vacancies.

### Simple application steps:

- 1 Talk with your NDIS planner/support coordinator.
- 2 Provide evidence for temporary housing need.
- 3 Contact Better Now for vacancy matching.
- 4 We help complete documents for NDIS approval.
- 5 Move in once approved – home ready, supports aligned.



### Current MTA / SDA Locations Across Sydney

#### South–West Sydney / Campbelltown Region

- ▶ Rosemeadow (Hamlet Crescent) NSW 2560
- ▶ Blair Athol SDA – Campbelltown
- ▶ Rosemeadow – Campbelltown Region House
- ▶ Leumeah Apartments (Single Occupancy)
- ▶ Liverpool Apartments (Single/Double Occupancy)

#### Western Sydney / Nepean Region

- ▶ Werrington (Princess Street) NSW 2747
- ▶ Werrington – Nepean Region House
- ▶ Jordan Springs Apartments (Single Occupancy)
- ▶ St Mary's Apartment (Single Occupancy)

#### Parramatta / Inner–West Region

- ▶ Guildford West (Guildford Road) NSW 2161 – 1-bed apartments
- ▶ Merrylands (The Gladstone House)

#### Other Sydney Options

- ▶ Auburn Robust Villa (Single Occupancy)



**Call 0433 916 727 to view vacancies or book a tour.**